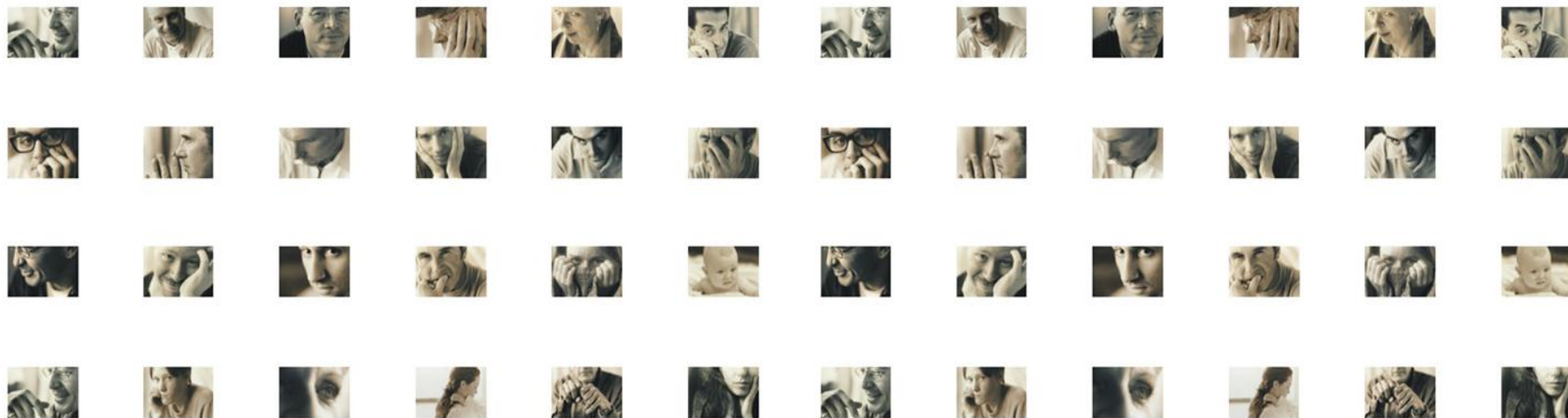


Rehabilitation Service – Social Service

Present State and Trends

17.09.2010
Marina Runno
Social Welfare Department



võrdsed võimalused inimväärseks eluks



The aim of rehabilitation service:

- ▶ To improve the ability of people with disabilities to cope independently, to enhance their social integration and commencing and maintaining employment (in Social Welfare Act as from 2005).
- **Targets:**
 - ▶ **Children with disabilities** - to foster the child's development and to ensure equal and appropriate educational opportunities
 - ▶ **People with disabilities of working age** – to support their independent ability to cope and work, incl acquiring and maintaining employment
 - ▶ **Elderly people with disabilities** - to achieve their maximum ability to live independently and reduce the care burden of their family members



The groups entitled to rehabilitation services:

- ▶ Children and working-age people who are applying for the degree of their disability
- ▶ People with disabilities
- ▶ People aged 16 - 65 with special needs regarding their mental health with their impairment rating of at least 40%
- ▶ Minors (aged 7-18) on the basis of a decision of a juvenile committee



The rehabilitation service currently provided by the government includes:

- ▶ Rehabilitation need evaluation and development of an individualized rehabilitation plan (for adults valid for 6 months up to 5 years; for minors valid for 6 months up to 3 years)
- ▶ Guidance in the implementation of the plan
- ▶ Provision of services to a person with disabilities and his/her family by different rehabilitation specialists (the list includes 17 services)
- ▶ Accommodation, if the services are provided in inpatient rehabilitation facilities (up to 5 days)
- ▶ Refunding of travel costs if a person travels out of the municipality of residence for receiving rehabilitation services, or the provider of the rehabilitation service travels to the person in question



Providers of rehabilitation services:

- ▶ Rehabilitation services may be provided by sole proprietors, legal persons, local government agencies, or agencies administered by governmental authorities registered as providers of rehabilitation services in the register of economic activities.
- ▶ The provision of rehabilitation services is ensured by the Social Insurance Board.

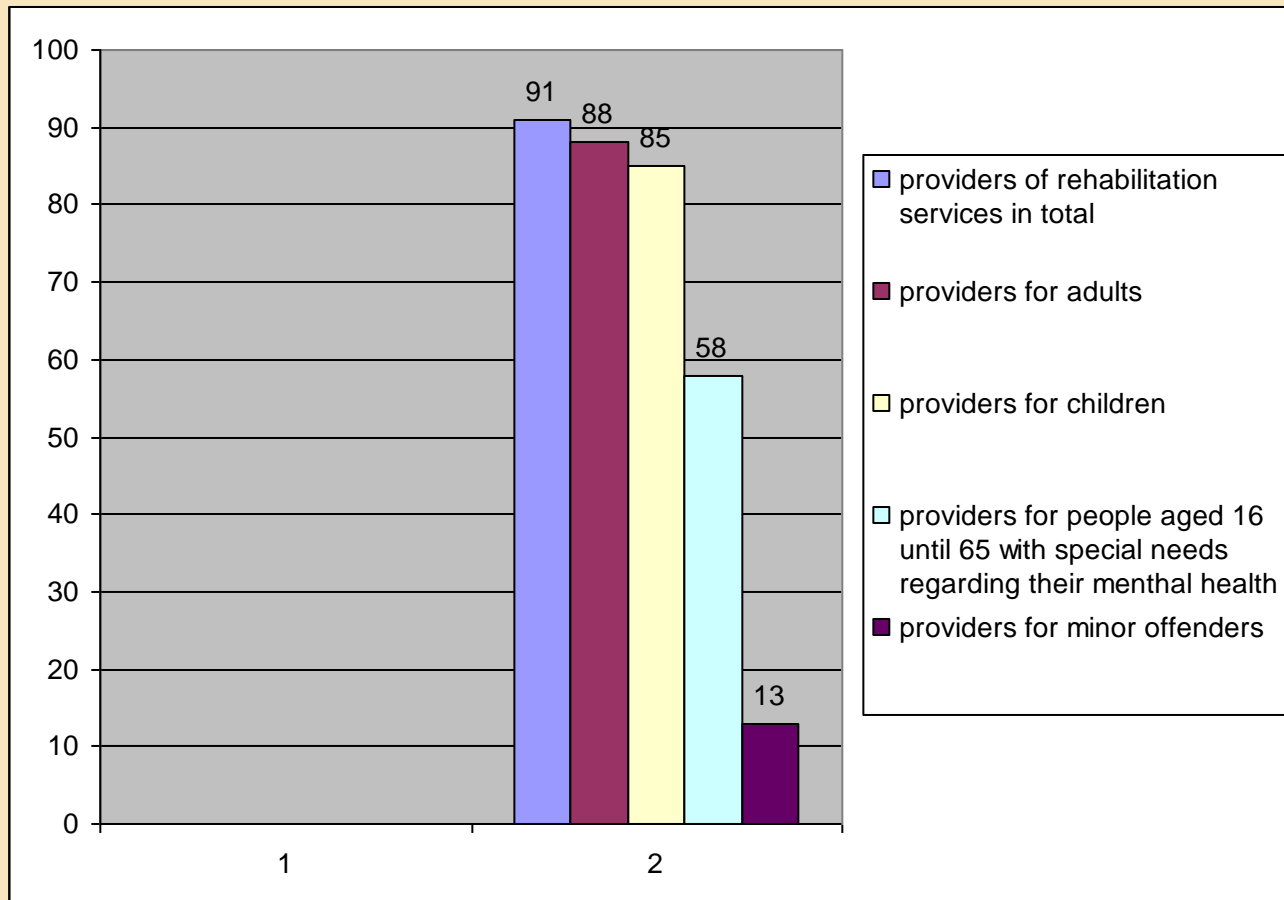


Rehabilitation services providers:

- ▶ In 2007- 63 rehabilitation services providers
- ▶ In 2008 - 74 rehabilitation services providers
- ▶ In 2009 - 76 rehabilitation services providers
- ▶ In 2010 - 91 rehabilitation services providers



Providers of rehabilitation services





Providers of rehabilitation services

- ▶ 85 providers for children
- ▶ 88 providers for adults
- ▶ 58 providers for people aged 16 until 65 with special needs regarding their mental health
- ▶ 13 providers for minor offenders
- ▶ 91 providers of rehabilitation services in total



The rehabilitation service providers break down by the types of institutions

▶ Hospitals	33
▶ Schools or educational institutions	9
▶ Sanatoriums	6
▶ Children's homes	2
▶ Hospices	2
▶ Day care centers	8
▶ Rehabilitation centers	17



Trends and activities

Currently, the following measures are being developed:

- ▶ principles for the implementation of a new rehabilitation system;
- ▶ policies and documentation for preliminary evaluation;
- ▶ criteria for the assessment of the need for rehabilitation services;
- ▶ implementation of ICF into rehabilitation need evaluation, planning rehabilitation and assessing results;



Trends and activities

- ▶ guidelines for the implementation of the main stages of the rehabilitation process: evaluation of needs and resources, target-setting, planning of activities, interventions and evaluation of efficiency;
- ▶ guidelines for the design of rehabilitation intervention programmes;
- ▶ mechanism for funding rehabilitation on a needs basis.

The applicability of the measures is being tested.



The aim of psycho-social rehabilitation service **is**

- ▶ to support the improvement of the rehabilitation system in Estonia
- ▶ by enhancing the cooperation between the medical, social and employment sectors, and
- ▶ by promoting employment-centred approach in rehabilitation.



Thank you for attention!



- A rehabilitation programme is an intervention that
 - includes complex activities necessary for the rehabilitation of a person,
 - has a clearly verbalised aim, and
 - has a fixed period of time during which developing and rehabilitating activities are actively offered.



This is an overview of the number of people with disabilities, and the break-down of the types of disabilities 01.01.2010 (total 120 432)

